



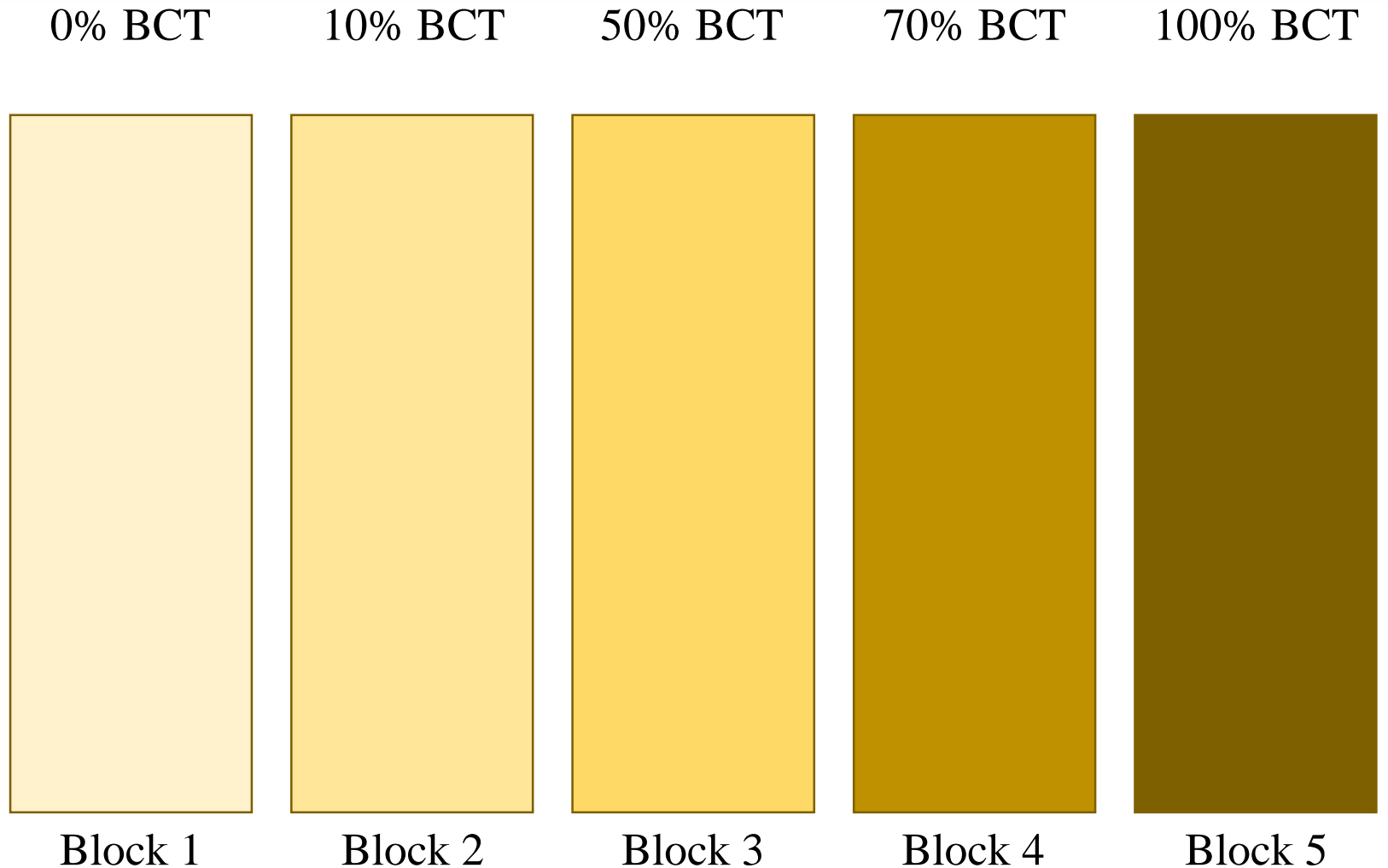
BioComplete™ Liquid Amendments

Lecture 10 – Application Methods (Part 2)

Case Study: Vineyard Coverage

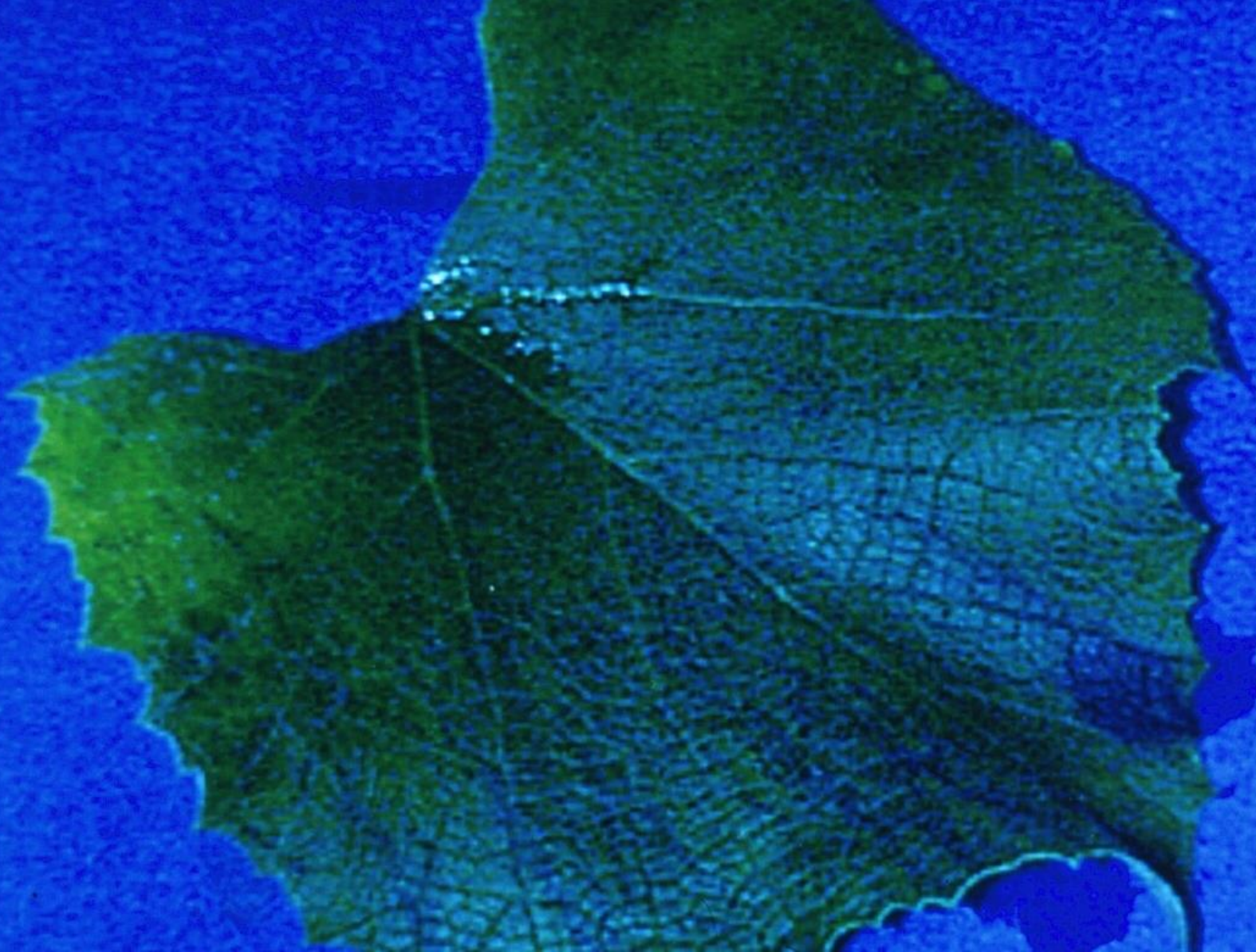
Vineyard was sprayed with varying coverage rates of BioComplete™ Tea and 70% coverage of *Botrytis Cinerea*.

BCT = BioComplete™ Tea
BC = *Botrytis Cinerea*



100% of grape leaf covered by BioComplete™ Tea

70% covered by *Botrytis Cinerea*



A circular fluorescence micrograph of a grape leaf. The leaf is covered with a dense pattern of green and yellow-green spots, indicating the presence of BioComplete™ Tea. A large, dark red area in the center of the leaf indicates the presence of Botrytis Cinerea. The overall appearance is a complex, textured pattern of colors.

**100% of grape leaf covered by
BioComplete™ Tea**

70% covered by *Botrytis Cinerea*

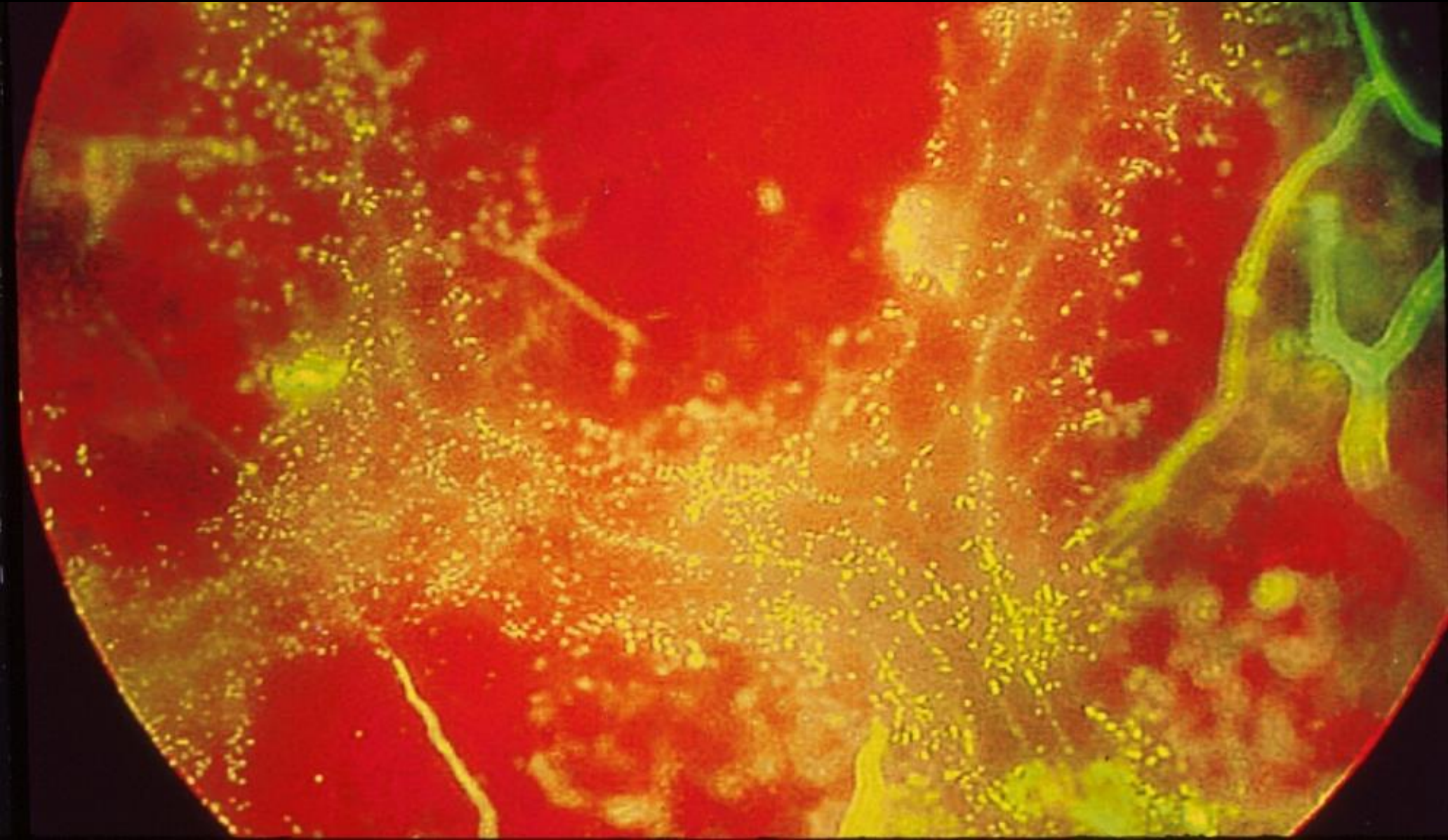


**70% of grape leaf covered by
BioComplete™ Tea**

70% covered by *Botrytis Cinerea*

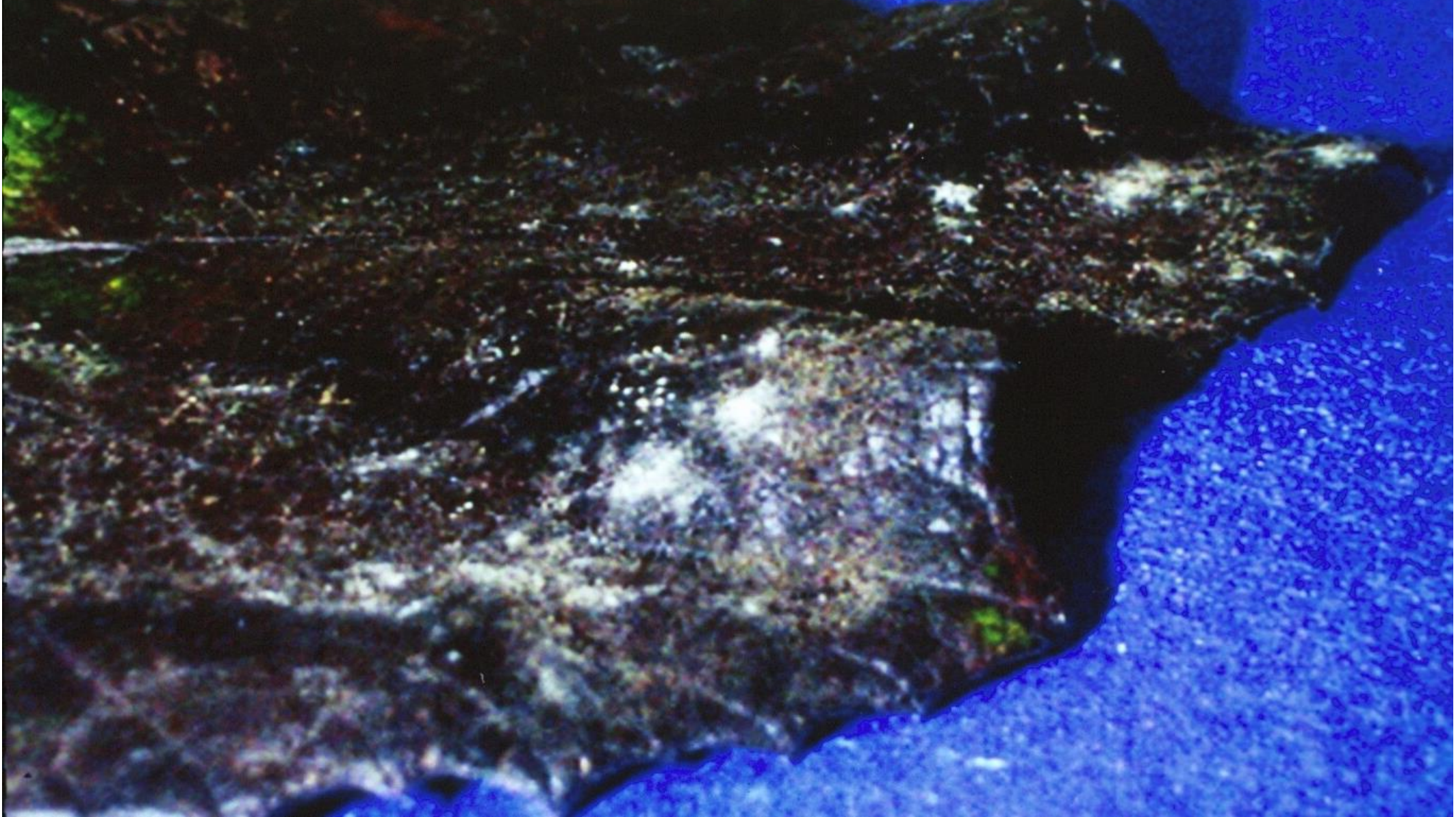
50% of grape leaf covered by BioComplete™ Tea

70% covered by *Botrytis Cinerea*



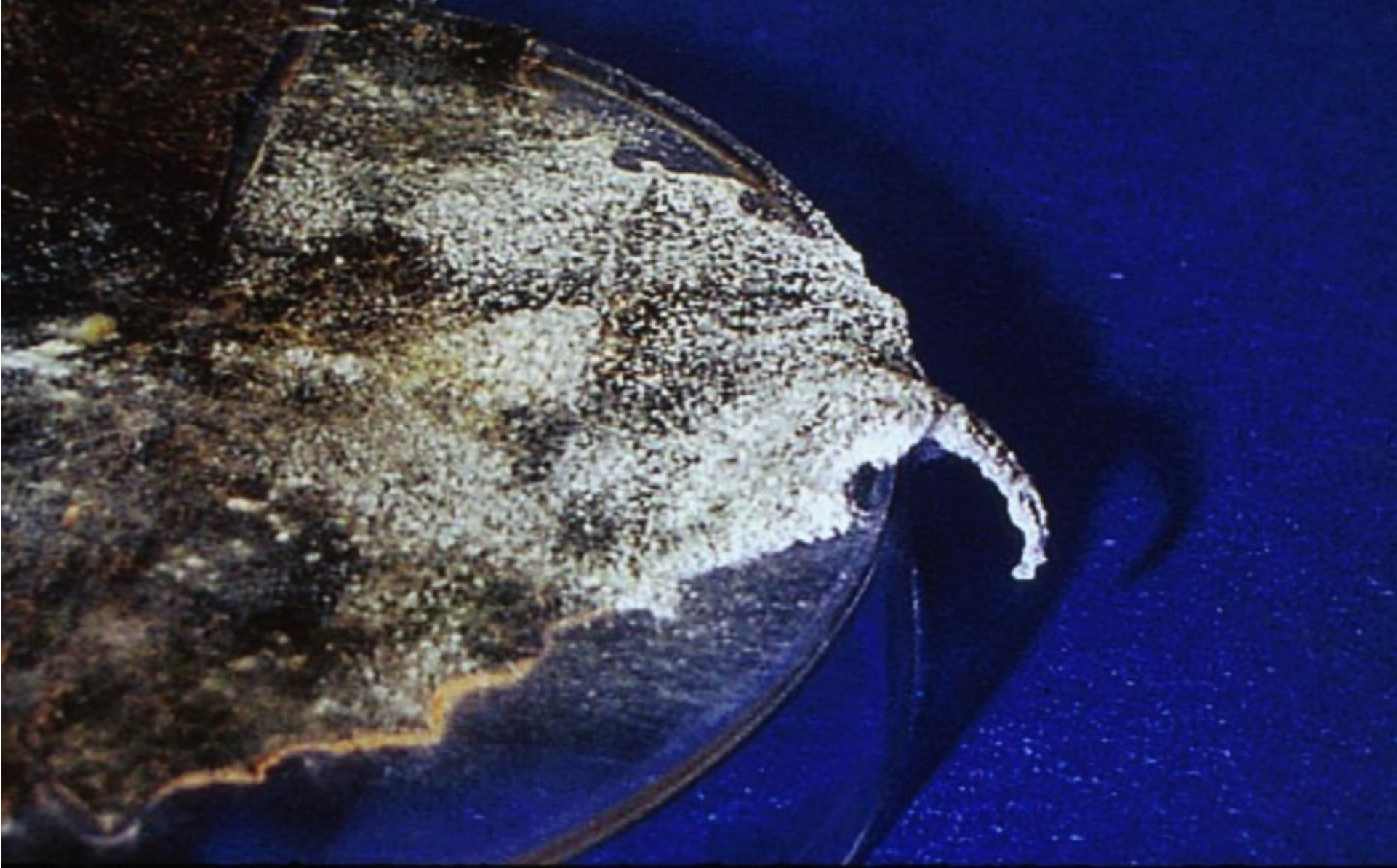
50% of grape leaf covered by BioComplete™ Tea

70% covered by *Botrytis Cinerea*



10% of grape leaf covered by BioComplete™ Tea

70% covered by *Botrytis Cinerea*





The Process

When to apply?

- Soil Drench - (20 gal/ac) spring and harvest OR 0.5 to 1 ton compost/ac
- On seed
- Crops – 1st true leaf, pre-, post-blossom
- Perennials – bud swell, monthly until no disease danger, weekly if disease pressure high
- Control – treatment DATA good idea in first year



BioComplete™ Tea sprayed (green area)
versus
No BioComplete™ Tea sprayed (brown area)



BioComplete™ Tea Application
Sept 7, 2003



BioComplete™ Tea Application
Sept 7, 2003



Grass Seed, Willamette Valley

2003