

Microscopy - Chapter 1

Lecture 10

Microarthropods, Algae, & Pollen

A microscopic image of a long, thin, segmented microarthropod, possibly a mite or springtail, with a dark central band and lighter outer segments. The background is a light, textured surface.

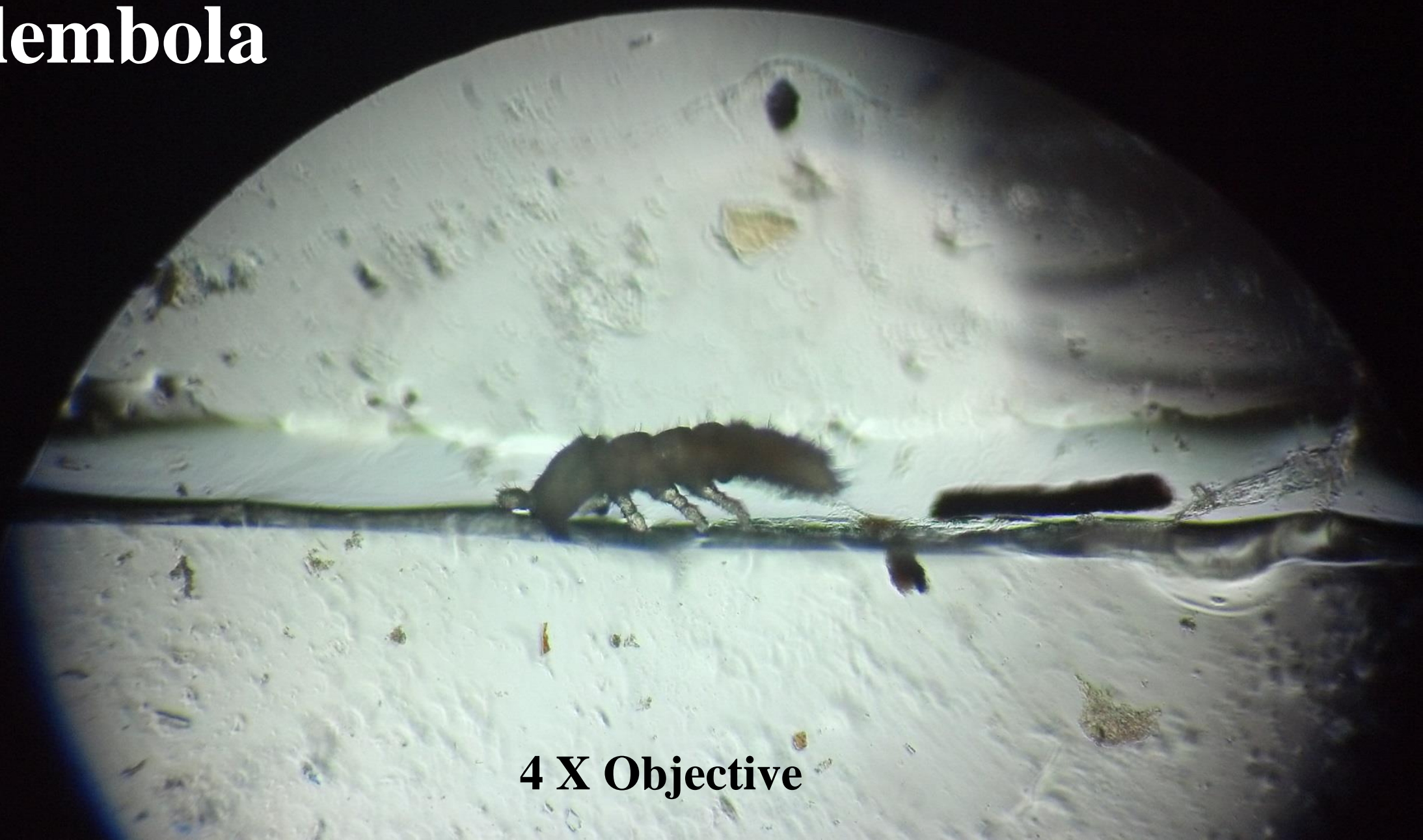
Microarthropods

- Release soluble nutrients available to plants after consuming fungi
- Build soil structure
- Serve as taxicabs

What is this?



Collembola



4 X Objective





Collembolan, or Springtail



Symphylan



Algae

- Can be single celled
- Can be in strands
- Look for pigments
- Photosynthetic organisms, usually only at soil surface





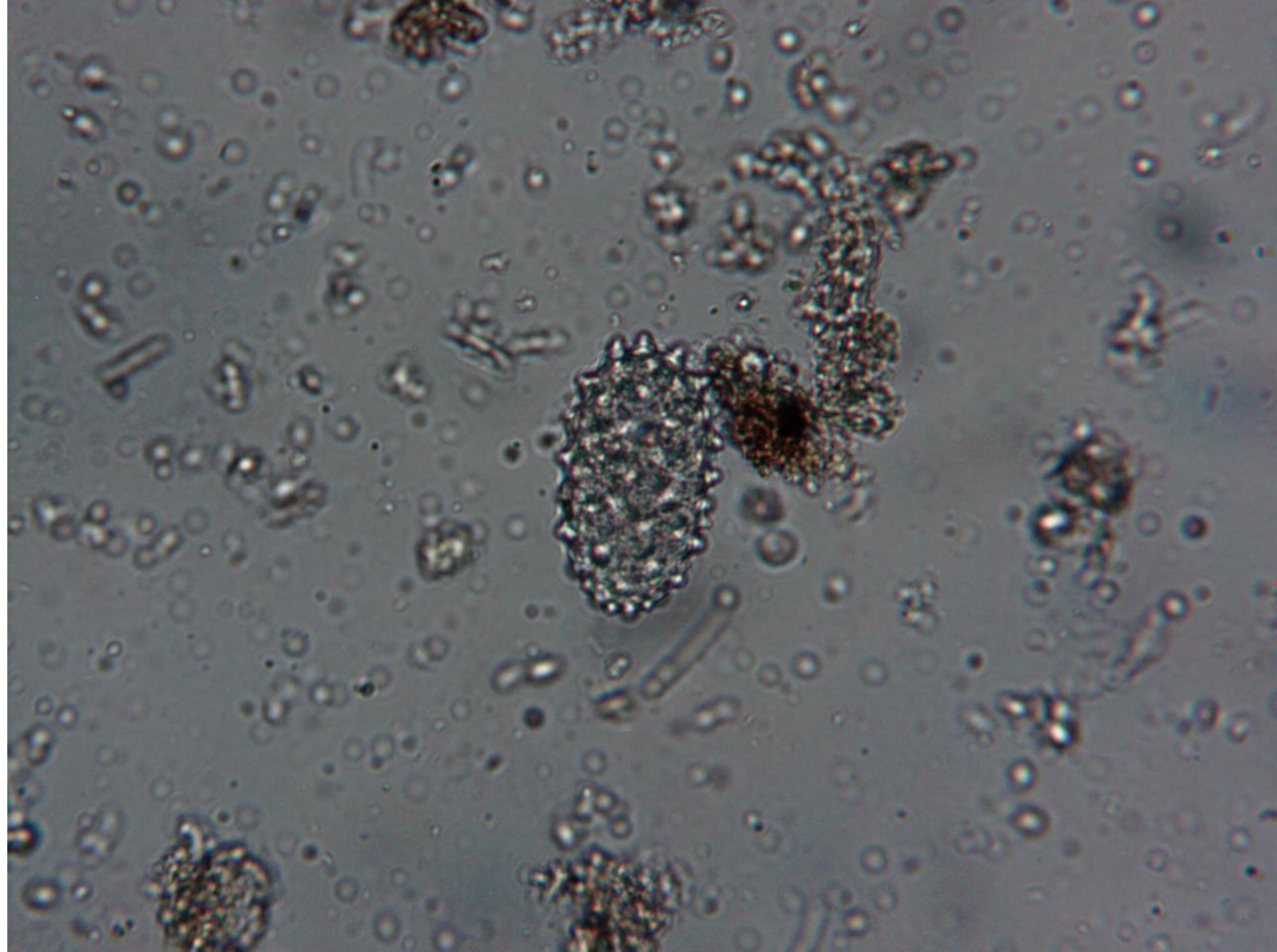




A microscopic image of a single pollen grain, showing its elongated, spindle-like shape and internal cellular structures. The grain is light brown and has a distinct central opening. The background is a light, textured surface.

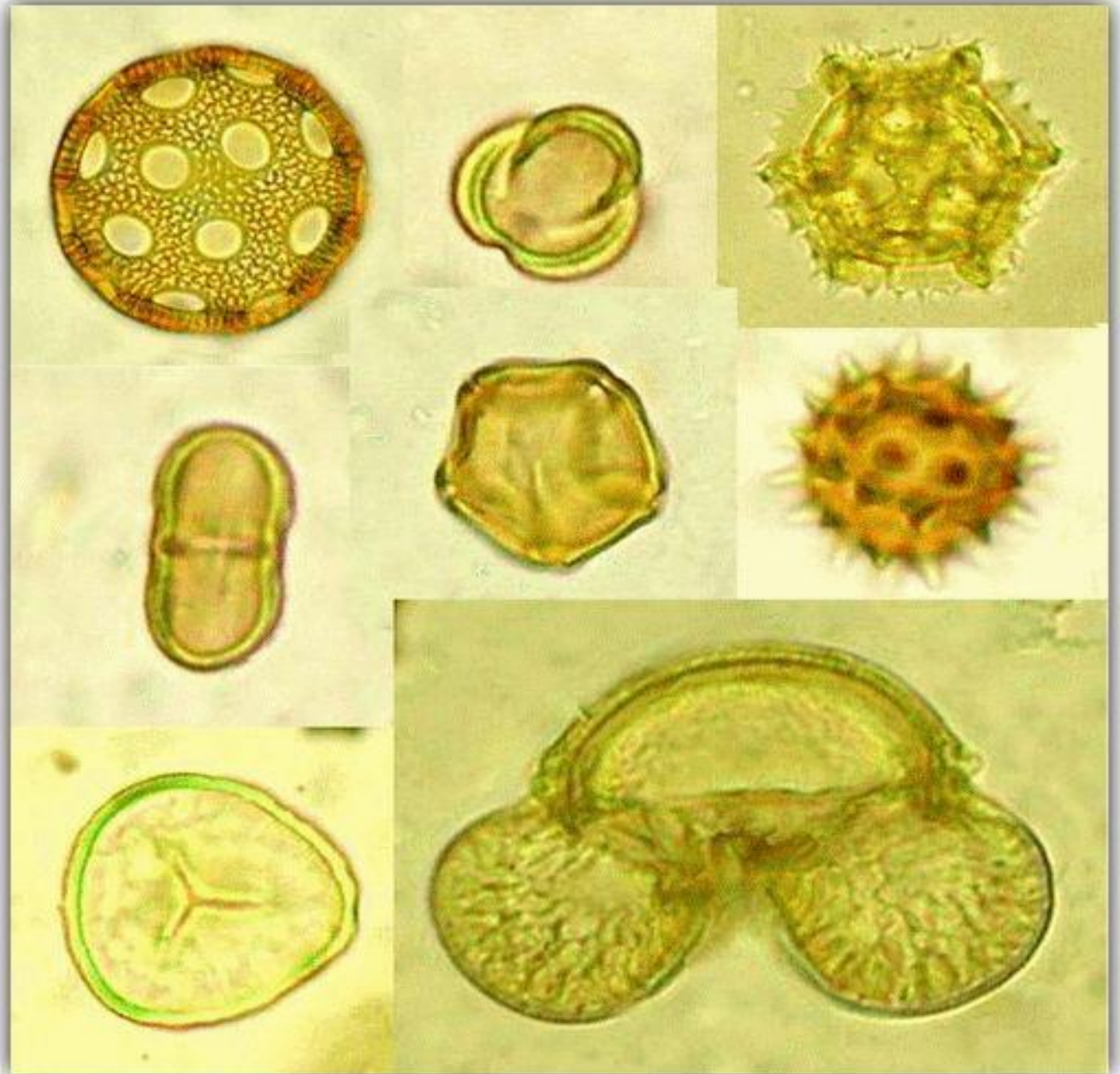
Pollen

- Single cell but with internal structures
- Central openings, oil droplet quite common
- Many sizes and shapes



Lots of sizes and shapes for pollen ---

Check out Microscope pictures of pollen for more great pictures.



(Elena A. Spiridonova, A. Aleshinskaya; Maria D. Kochanova).

Microscopic Mickey Mouse! Pine Pollen



From The MicrobHunter blog

